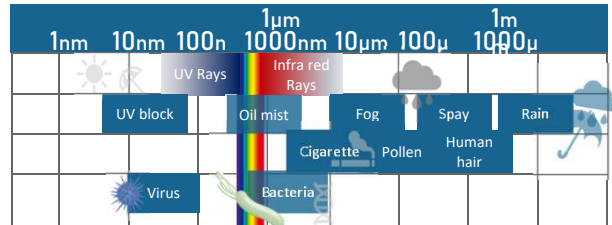
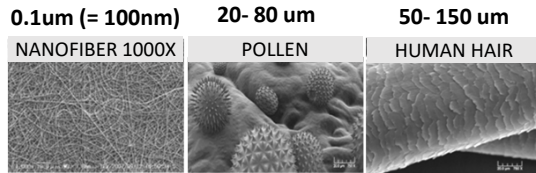


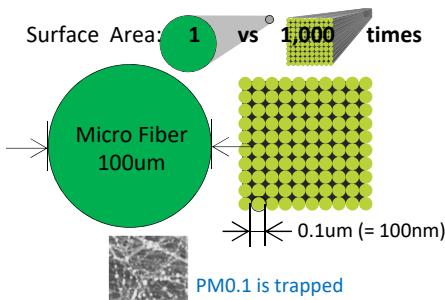
WHAT IS NANOFIBER?



NANO FIBER SPECIAL EFFECT

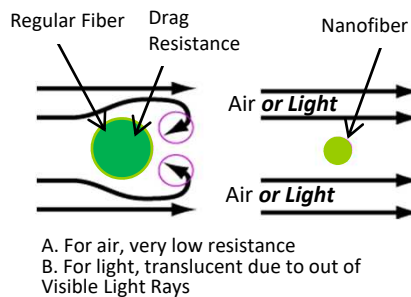
Ultra-High Surface Area Effect

Nanofiber Surface size is more than 1,000 times at same weight material

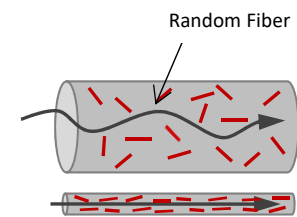


Ultra wide surface area blocks (or attracts) the tiny objects like PM dust and or virus of Molecule size

Nano Size Effect = Slip Flow



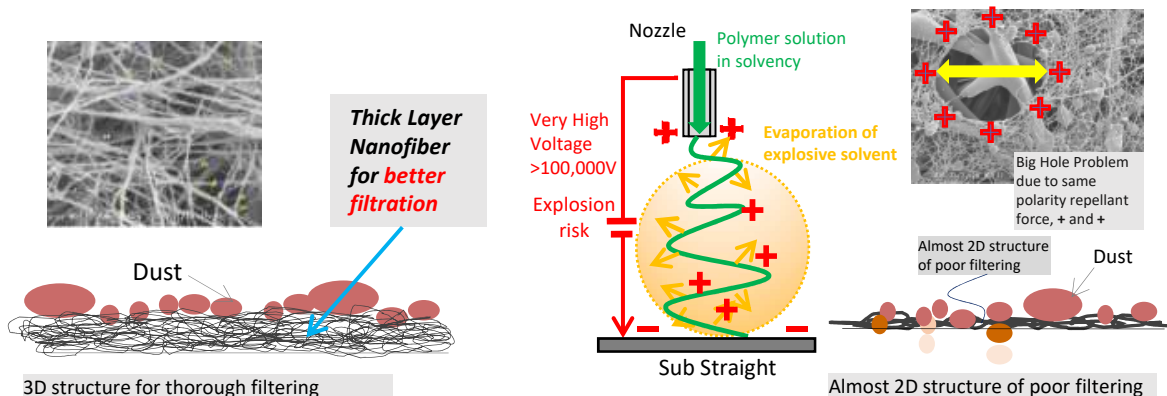
Ultra-Aligned Molecule Effect



- A. Physical strength
- B. Electric conductivity
- C. Heat conductivity
- D. Functions also as Molecule sensor.

NANOFIBER PRODUCTION SYSTEM COMPARISON CHART

ANT Solution	Problems of ESD System (industry standard)
Extremely High Yield 200nm above: 5-100Kg/hour, or more Less than 200nm: TBA Totally scalable --- unlimited volume	Very Low Yield Approx. 0.07Kg/hour Unscalable --- limited volume
Wider fiber diameter range ANT System: 50nm(min)	Limited and thick fiber dia. Difficult at Less than 300nm
Very safe operation Safer operation (Regular manufacturing factory)	Explosion Risk by High Electric Voltage & Solvent Many Protection Systems & clean room/facility needed
Following plastics and more to be added 200nm above: PP, PET, PE, PS, PBT, Nylon (all melting plastics) Less than 200nm: PVA, PAN, PVDF, PU, PES, etc. (more than ESD)	Limited Raw Materials (Chemically soluble material Only) Common plastics are PU, PVA and Nylon (expensive)

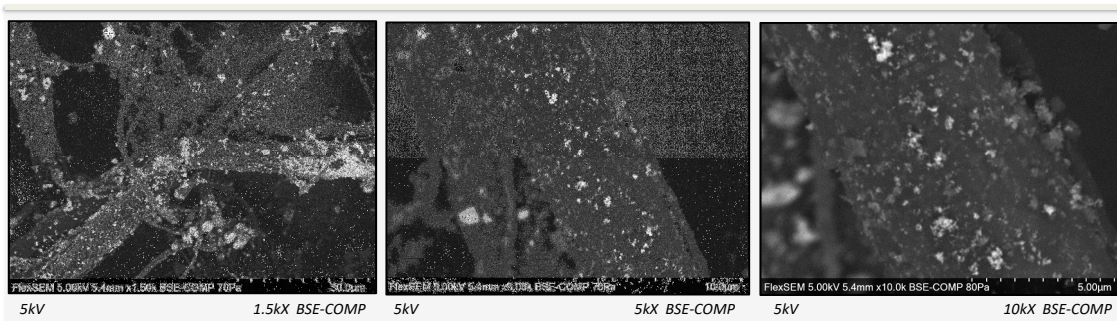


ANTIMICROBIAL TEST RESULTS

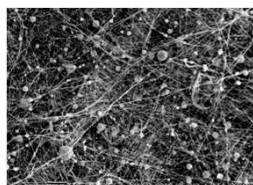
Ag+Cu nanofiber	Dark Storage (microorganism cfu/ml)	
15 minute contact challenge time	E.coli	MRSA
Initial Inoculum	1.0×10^6	1.1×10^5
(Ag & Cu Metal Based)	<5.0*	<5.0*
Control	6.4×10^5	4.5×10^4

*None detected; the limit of detection is 5cfu/ml is plated in duplicate

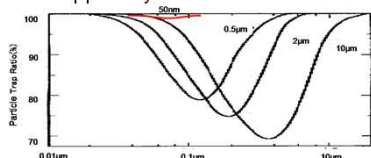
The above tests were conducted by Biological Consulting Services of North Florida, Inc (BCS). BCS is accredited by the State of Florida Department of Health and is registered with the US EPA Laboratory Compendum.



SUPER AIR FILTRATION FOR MASK, FILTER & CLEAN ROOM



The particle, PM0.1 (100nm) is trapped by the nanofiber



Initial Particle Trap Ratio at 5.3cm/second

Particle size	15.9nm	38.1nm	97nm	333nm	680nm	1.63μm	3.95μm	8μm
Nano Mask								
PES-4 layers	100%	100%	100%	99.997%	100%	100%	100%	100%
Commercial Masks								
Regular mask	88.3746%	63.3786%	56.2754%	43.554%	48.2466%	74.337%	98.234%	100%
Pollen 99% cut mask	94.0133%	86.5123%	84.4498%	91.048%	95.8933%	99.019%	100%	100%
PM2.5 mask	99.7375%	95.037%	92.5777%	94.477%	98.1863%	99.753%	99.798%	100%

APOLLO NANOTECH INC

President CEO

MAYUKI YANAGAWA

3555 Lomita Blvd. Suite C Torrance, CA 90505

Phone 310 699 4798

E-mail: mayuki.yanagawa@gmail.com